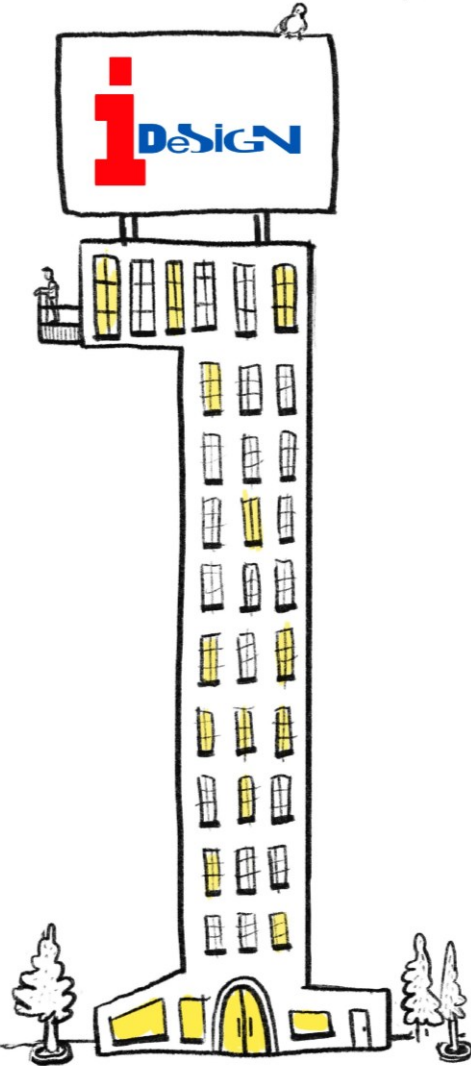
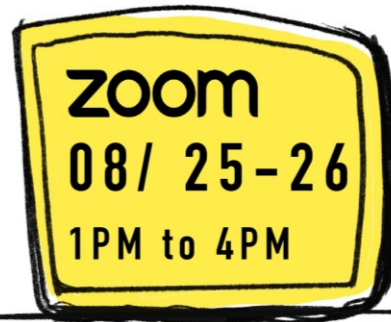


BUILDING SUSTAINABLE COMMUNITIES

1st VIRTUAL YOUTH ARCHITECTS CONFERENCE

- + youth architect's pitch
- + roundtable with city planners
- + guest speakers from experts
in the architecture field



2020 Youth Architects

■ program developers/facilitators

ELENA KORNIAKOVA

Lawrence Heights Resident/Architect
Director of Lawrence Heights Art Centre

JOY SMITH-BROWN

Youth Worker at North York Community House

■ content

PROGRAM DESCRIPTION

4

DESIGN TEAM

New Heights Creative Art Centre

6

DESIGN TEAM

The Crystal Pavilion

10

DESIGN TEAM

The Phoenix Pavilion

14

ROUND TABLE

19

THANK YOU

RESIDENT CO-FACILITATORS

Denise Quammie

Mohamed Hadi

Mariah Lisa Baker

Siman Ibrahim

Salman Mohamoud

Liban Ahmed- Arif

Mariama Bangura

Natachez Feare

PARTNERS

Ryerson University

University of Toronto

Jane Finch Community

and Family Centre

Sustainable

SPEAKERS/MENTORS

Reza Nik

Rick Sole

Derek Brunelle

FUNDERS

City of Toronto

Cultural Hotspot SPARK Project

United Way Greater Toronto

DESIGN

Rosianne Berthelot

IG: @rosianneb

Youth Architects Program

Engaged over 20 youth and resident leaders in a co-design process to:

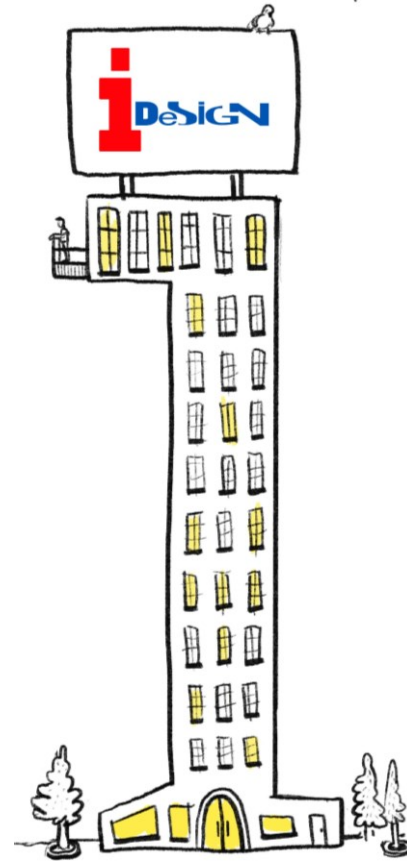
- ❑ Build understanding and empathy around the Lawrence Heights Revitalization
- ❑ Recognize residents as experts of their own lived experiences and their value in the design process
- ❑ Re-imagine the community through an architectural design approach
- ❑ Present design ideas to the community and contribute to the Lawrence Heights revitalization plan



Design Challenge: Park Pavilion /Community Hub

Building Parametres and Program Requirements:

- ❑ Up to 300 sq. m. of enclosed space, 100 sq. m. of outdoor space
- ❑ Building heights: up to 15 m.
- ❑ Vertical levels: up to 3 floors
- ❑ Accomodation for 3 various programs
- ❑ Projected design should not duplicate existing facilities



DESIGN TEAM
NEW HEIGHTS
CREATIVE ART
CENTRE



Youth Architects:

Jacob (Lead Designer)

Natachez (Lead Researcher)

Athavan (Designer)

Showbiga (Researcher)

Thalia (Researcher)

Clients-Co-designers/Residents of LH:

Denise (Senior Council rep)

Salman (Parent Council rep)

Siman (Youth Council rep)

Clients' requests:

- gardening amenity
- space for computer programs
- facilities for artistic expression

Design Concept

Context:

Revitalization entails densification, gentrification, and dissolution of communal identity

Challenge:

We want to preserve Lawrence Heights history and connect with growing community

Solution:

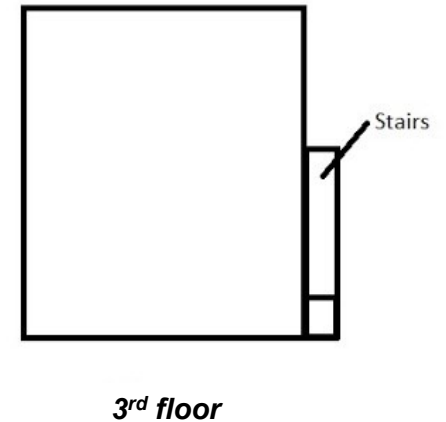
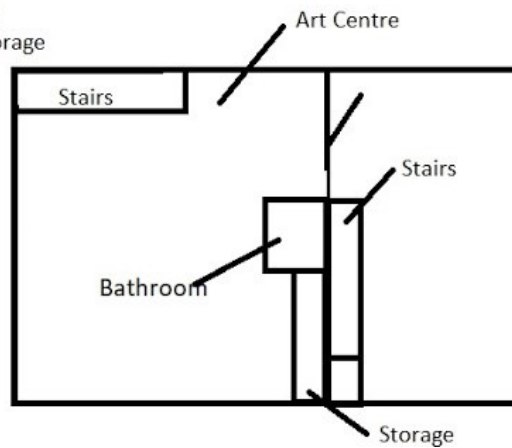
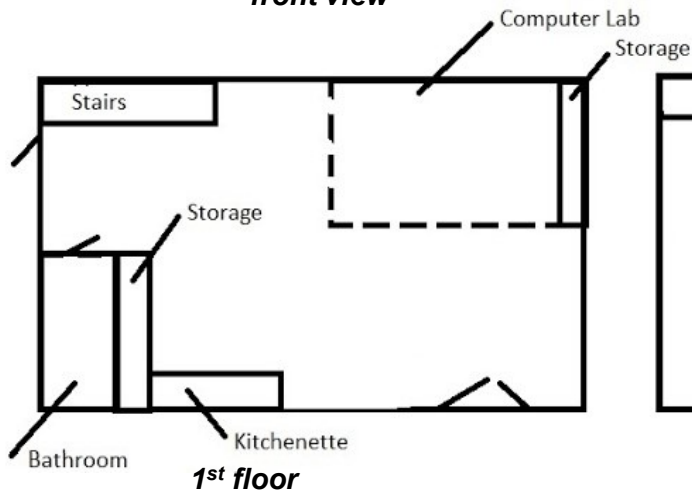
Three supporting colored pillars of our pavilion represent PAST, PRESENT, and FUTURE of Lawrence Heights

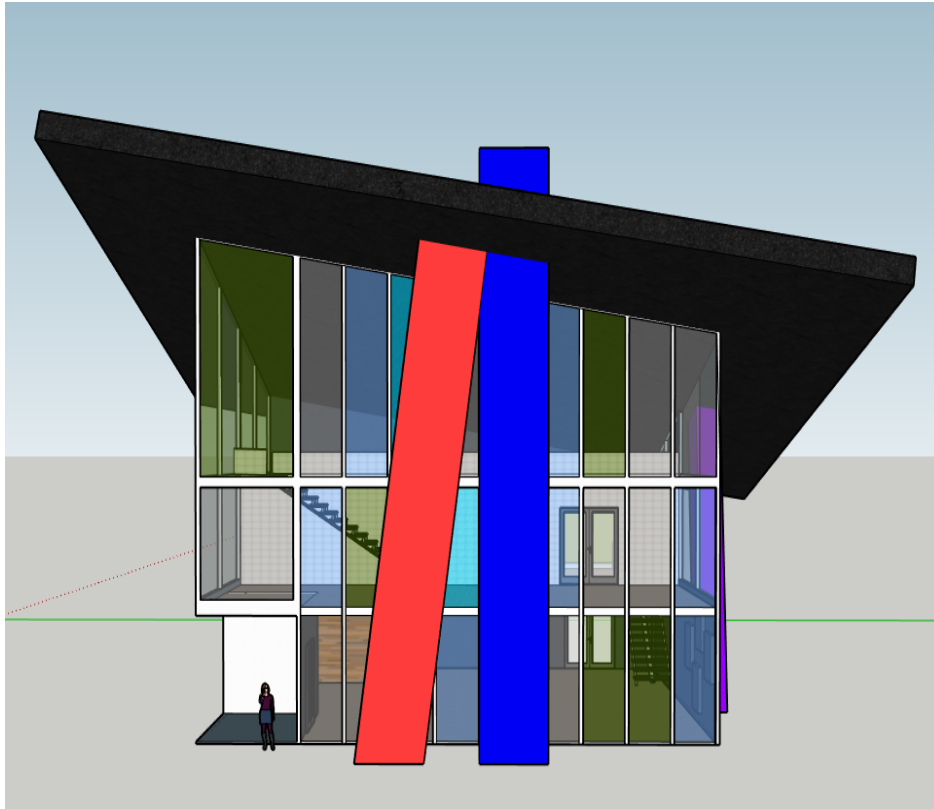


front view

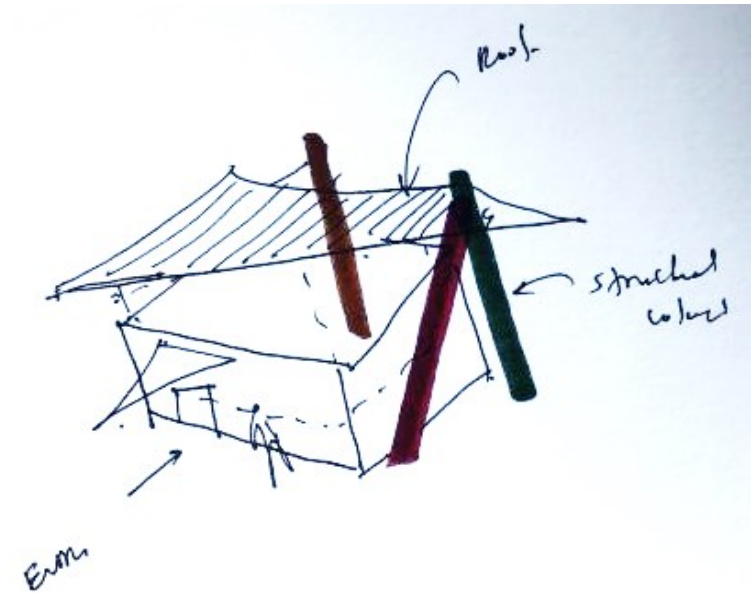
WHAT does the pavilion offer?

- computer lab space (1st floor)
- meeting space (1st floor)
- kitchen space (1st floor)
- space for art and creativity (2nd floor)
- green space (3rd floor)





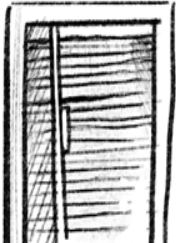
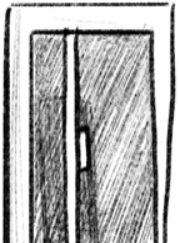
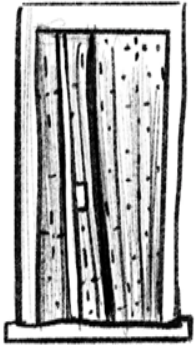
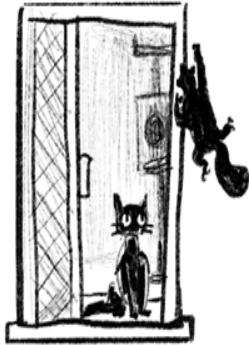
side view



concept drawing



location setting



DESIGN TEAM

THE CRYSTAL

PAVILION



Youth Architects:

Havish (Lead Designer)

Negin (Lead Researcher)

Mohamed (Designer)

Maury (Researcher)

Clients-Co-designers/Residents of LH:

Mohamed (Senior Council rep)

Mariama (Parent Council rep)

Liban (Youth Council rep)

Clients' requests:

- green programs and study space
- safe space for parents and kids
- multi-faith prayer space

Design Concept

Context:

Negative stigma surrounds

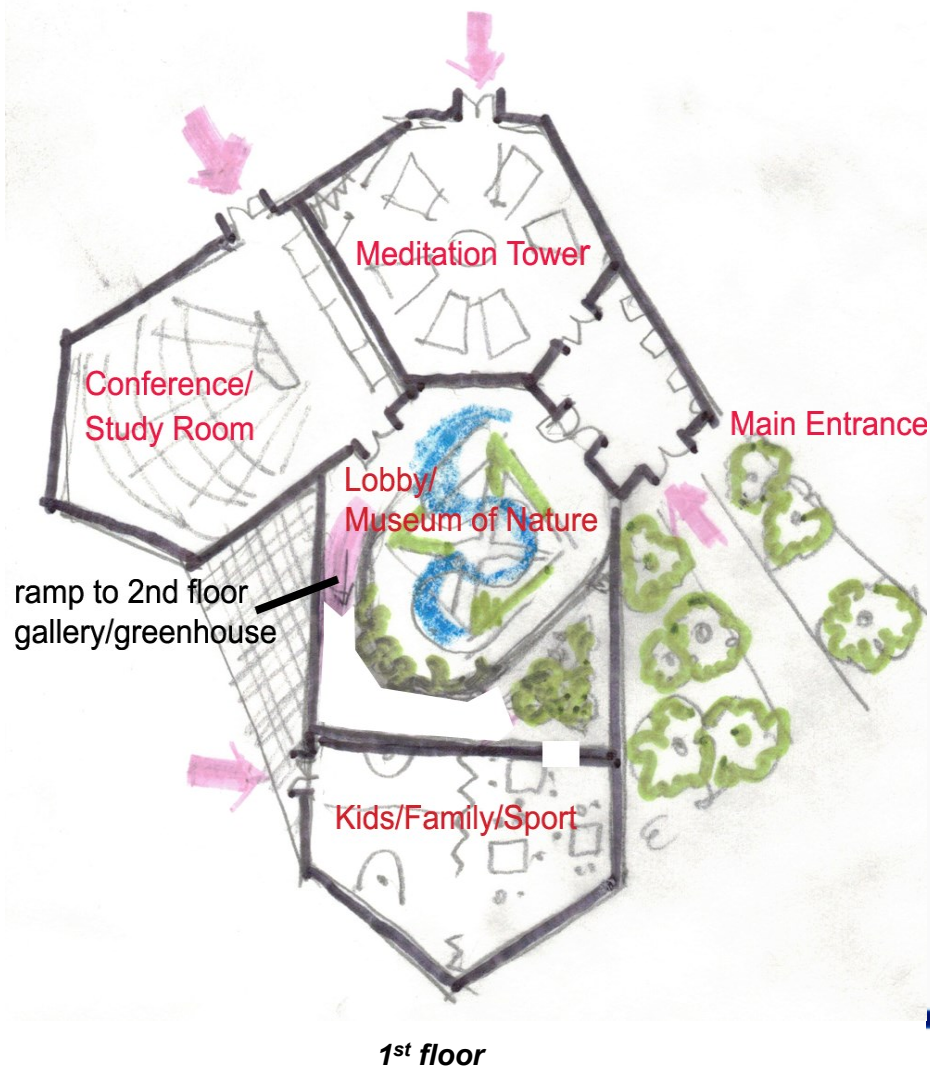
Lawrence Heights community due to gun violence in the area

Challenge:

We want to replace negative stereotypes with new positive values

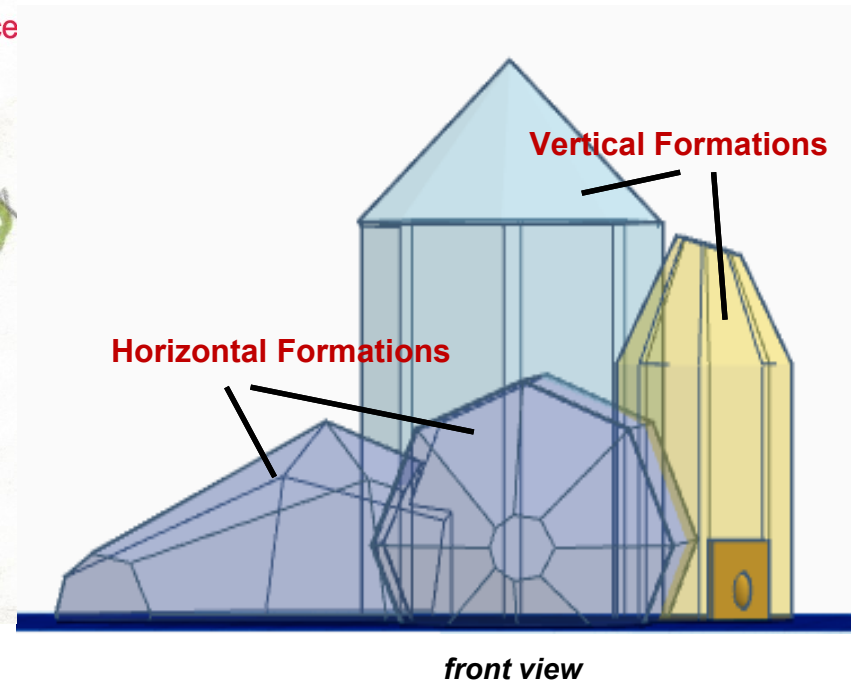
Solution:

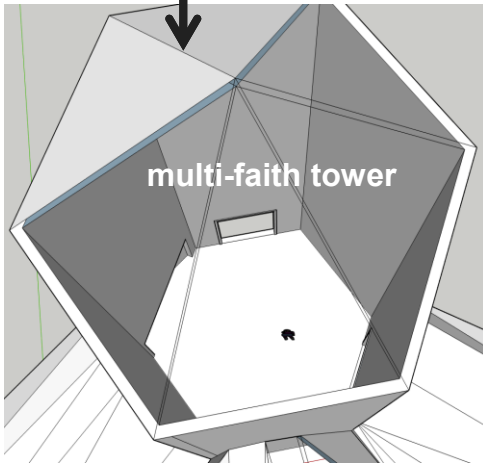
Crystal symbolizes rebirth and purity as well as essence of nature experienced immediately at the lobby area which is designed as a Museum of Nature



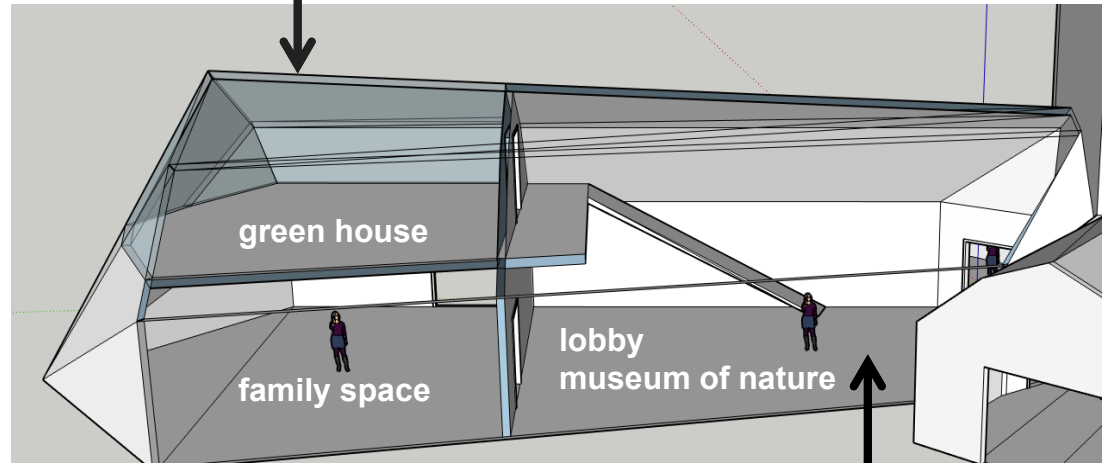
WHAT does the pavilion offer?

- multi-faith/meditation space (1st floor)
- museum of nature (1st floor)
- conference/study room (1st floor)
- family room (1st floor)
- indoor gardening space (2nd floor)

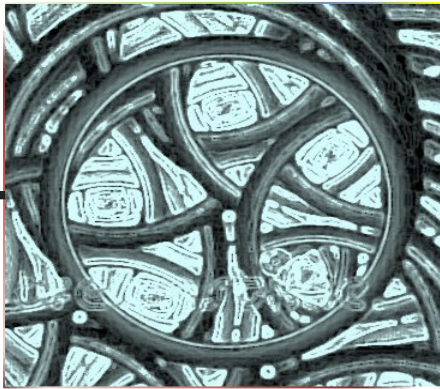




top view of the vertical formation of the pavilion



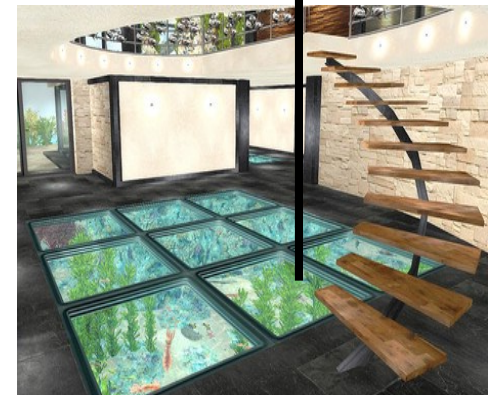
side section of the horizontal formation of the pavilion



Interior Design Concept #1
stain glass installation on the ceiling of the vertical formation of the pavilion



Interior Design Concept #2
roof pattern made out of UV protected glass and solar panels covering horizontal formation of the pavilion



Interior Design Concept #3
floor-integrated aquarium is part of display of the museum of nature

DESIGN TEAM

THE PHOENIX PAVILION



**LAWRENCE
HEIGHTS**
ART CENTRE

Architects:

Elena (Lead Designer)

Ophelia (Youth Artist)

Olha (Designer)

Yuri (Designer)

Clients: local artists/TCHC workers

local artists (LH Art Centre reps)

Ion (TCHC Maintenance rep)

Richard (TCHC Safety rep)

Olga (Saranac art group rep)

Clients' requests:

- green and study space
- art/design workshop space
- art gallery and office spaces
- parking for maintenance/safety unit workers

Design Concept

Context:

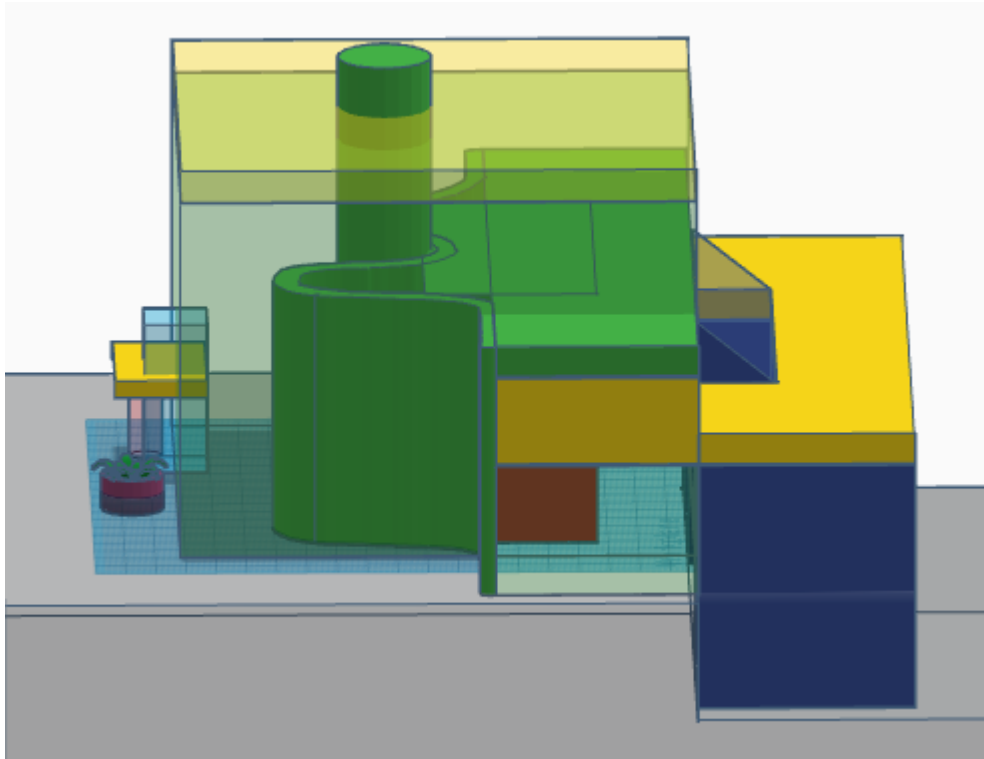
TCHC workers and residents share public spaces that are insufficient in size. These conditions often propel confrontation.

Challenge:

We want to comfort both groups and build spaces that inspire friendly relationships and collaboration

Solution:

The Phoenix Pavilion is a space of inspiration. Like the phoenix rising from the ashes, it symbolizes the revitalization and rise of new horizons for creativity and friendship



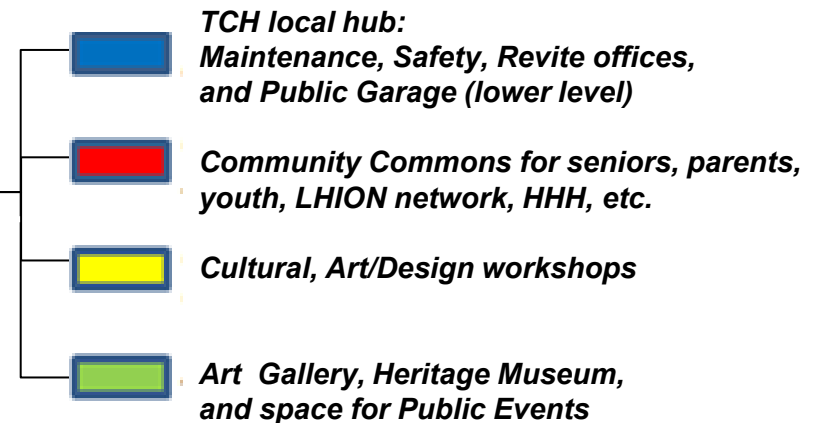
side view : diagram indicates programming zones

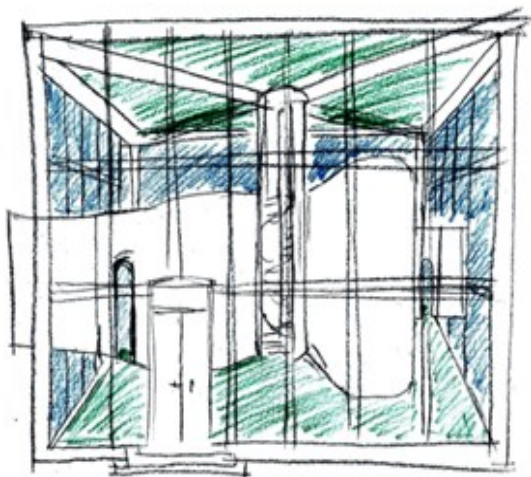
WHAT does the pavilion offer?

- Generous gallery space (1st & 3rd floor)
- Rooftop deck (2nd floor)
- Various studio spaces (1st & 2nd floor)
- Conference rooms and offices (1st-3rd floor)
- Public garage (1st floor- lower level)

DESIGN elements

- Glass curtain shell
- Penetrating meandering wall
- Circular staircase
- Indoor green island connecting TCH offices and community commons





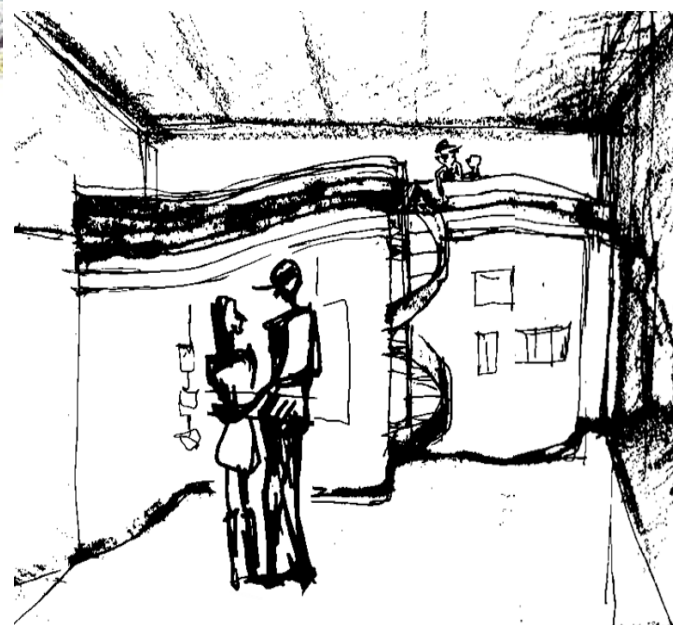
front view



Phoenix
by Ophelia Riley
local emerging artist living with autism



*3D projection of Phoenix on
meandering wall, stair wall and floor*



concept drawing of Art Gallery interior

2020 YOUTH ARCHITECTS

OCTAVIA RILEY

MAURY RATHAKONE

THALIA JANNA BARRETTO

MOHAMED SHEIKHOMAR

JHON MARC DAR

HAVISH VYAS

DAYANA MOKHTARSAADATMAND

SHOWBIGA BUVANENDRAN

JACOB HANEY

ATHAVAN SURENDIRAN

NEGIN ABDOLLAHI

DIANA LIN

ROUND TABLE DISCUSSION

BUILDING SUSTAINABLE COMMUNITIES

LAWRENCE HEIGHTS **REVITALIZATION**

QUESTIONS FOR DISCUSSION

1. What are the steps for building trust between city officials and community groups?
2. What barriers do we need to overcome to achieve meaningful collaboration between city officials and community groups?
3. What new channels do we need to create for sharing decision-making power while building sustainable communities?

SUMMARY OF DISCUSSION

MAIN PRINCIPLES FOR COLLABORATION BETWEEN RESIDENTS AND DECISION MAKERS

1. **COMMUNICATION:** *Intense and consistent communication throughout planning-designing-construction-completion-evaluation stages of redevelopment should allow for feedback and input from residents throughout the project for flexibility and prompt adjustments. Two-Way communication needs to be prioritized.*
2. **COMMUNITY ENGAGEMENT:** *Decision makers (City, TCHC, Developers) need to invest in building relationships with the community and provide meaningful opportunities for residents to get involved in different roles including a revitalization review panel. Decision makers need to be visible, known and accessible to residents.*
3. **SOCIAL MEDIA:** *Effective tool to reach residents and promote opportunities to get involved in the revitalization project*
4. **STIGMA:** *Address and confront stereotypes about residents from lower income, racialized, under-resourced communities to promote meaningful collaboration.*
5. **RESIDENTS VISIONS AND DREAMS:** *Residents bring immense value to the design process. It is discouraging when they are not incorporated into the revitalization plans and it contributes to a breakdown in communication, collaboration, and trust. It is important to be transparent about how their ideas will be implemented along with any barriers or challenges. There is a strong desire to see action when residents propose things to decision makers.*
6. **CLEAR NAVIGATION CHANNELS:** *There is a need for transparent administrative structure for resident-visionaries to know who to consult ABOUT questions and ideas regarding redevelopment of their communities*
7. **COMMUNITY ACTION GROUP:** *with members of each of the stakeholder groups to share decision making power during revitalization program*

NEXT STEPS

1. Revisit City - Community relationship practices
2. Find common ground /mutual incentives in redevelopment process
3. Create framework for new partnership format and efficient two-way communication: social contract between City and communities
4. Find ways for integration of Youth Architects' design concepts into Lawrence Heights revitalization plan